

University of
Lethbridge



Faculty of Fine Arts



Produced by ASTeRIX Centre for Research-Creation,
within the University of Lethbridge Faculty of Fine Arts
Assembled and design/layout by Tyler J Stewart

INTRODUCTION

ASTeRIX welcomes you to the University of Lethbridge! This guide is designed to help you find services, supports, and resources for Fine Arts students and artist-scholars engaged in research-creation projects, along with collaborators outside the bounds of artistic practice, as ASTeRIX strongly supports interdisciplinary research. We hope this guide will expand your horizons to become informed of the many different touch-points outside your own area of research.

[ASTeRIX Centre for Research-Creation](#) brings together educators, researchers, students, artists, and the community at large to work across disciplines, fostering training/mentorship and collaborative research opportunities. ASTeRIX is interested in critically and creatively exploring, through a transdisciplinary research-creation lens, the ramifications of emergent technologies.

This guide aims to empower students, ensuring you have what you need to be successful as artist-scholars engaged in research-creation at the University of Lethbridge, and beyond into the wider Alberta arts community. It is also designed to integrate with in-person events that help tangibly introduce artist-scholars to the resources mentioned here. Please [visit the ASTeRIX website](#) for info on upcoming events.

If you have questions, need a helping hand, or a friendly introduction, we're here to help! Please contact asterix@uleth.ca for assistance.

TABLE OF CONTENTS

- P. 2 - Faculty of Fine Arts resources
- P. 4 - Cross-campus Resources For All Students
- P. 6 - Faculty of Fine Arts Annual Events
- P. 7 - Fine Arts Funding Resources
- P. 8 - Internships, Ensembles, Auditions
- P. 9 - Lethbridge Arts Community Venues and Supports
- P. 12 - Provincial Arts Resources
- P. 13 - Additional Resources



FACULTY OF FINE ARTS RESOURCES

The first place to find comprehensive information regarding FFA resources is of course the [Uleth Faculty of Fine Arts website](#), which this document does not seek to duplicate or replace, but simply provide some shortcuts and links back to the sources of crucial information.

ASTeRIX encourages students to explore the wealth of resources available across departments in the Faculty of Fine Arts and consider ways they might engage with collaborators from other disciplines to extend existing, or develop new research-creation projects.

Follow this [link for the full list of all Spaces and Technology](#) available to Uleth Fine Arts students.

Art Department

Follow this [link to access resources/equipment in the Art Department](#) including:

- General Studio
- Painting & Drawing
- Photography
- Photography - Foundation Studio
- Printmaking
- Senior/Advanced/Graduate Studio
- Wood Shop

Find more information [here about Art Facility Access & Work Policies](#).

[Art Equipment Loans](#) are available to access equipment such as:

- Film and digital cameras
- Tripods
- Printmaking tools
- Data projectors
- Sound recorders



FACULTY OF FINE ARTS RESOURCES (CONTINUED)

Drama Department

Follow this [link to access resources/equipment in the Drama Department](#) including:

- Audio equipment and effects
- Lighting equipment
- Costumes
- Props
- Set pieces

Find more information [here on Spaces & Room Bookings](#)

Music Department

Follow this [link to access resources/equipment in the Music Department](#) including:

- Practice rooms
- Recital hall
- Recording studios
- Audio editing suites
- iMac computer lab
- Other ensemble rehearsal spaces

Find more information [here on Recordings and Collaborations with DAA Students](#).

New Media Department

Follow this [link to access resources/equipment in the New Media Department](#) including:

- Asper Centre for New Media
- Computer labs
- Cove Studio
- Digital Cinema Suite
- Game research lab

Find more information [here on Equipment Policies & Procedures](#).



CROSS-CAMPUS RESOURCES FOR ALL STUDENTS

[Agility](#) is a campus-wide program that is available to all University of Lethbridge students. Agility can help realize projects that students, faculty, and the community identify as meaningful initiatives. Agility supports multi-disciplinary projects that involve experiential learning in agriculture & agribusiness, social innovation, entrepreneurship, and emerging technologies.

The [Agility Innovation Zone](#) is a space on campus that provides students access to equipment, technologies, and resources to assist with their academic coursework. Students of all disciplines can access equipment like 3D printers, VR headsets, CNC routers and much more. Get creative, or just relax and play video games - there's something here for everyone.

The [THRIVE Professional Skills Program for Graduate Students](#) is an initiative to provide students with the professional development opportunities needed to succeed in their future careers. THRIVE's optional events, workshops, and other resources compliment your degree, offering opportunities in three main skill sets – teaching, research, and professional and career development. You can receive experiential education credit for many THRIVE opportunities on the [My Experience Transcript](#), giving you a competitive edge in the workforce.

The [Faculty of Education Curriculum Laboratory](#) is located on Level 11 of the University Library. This learning resource centre has been designed to support the Faculty of Education's teacher education program. Multi-format materials relevant to the Alberta school curriculum are available for preview and/or loan.

The [University of Lethbridge Art Gallery](#) is an accessible space that fosters visibility to the arts through diverse community engagement, supported by sustainable infrastructure, and founded on relationships, consultation, and education.

The [Penny Gallery](#) (Dr. Foster James Penny Building) provides a venue for exhibitions and public performance, and serves as laboratory space for student, faculty research and creative activity within all fine arts disciplines. This multi-use space serves users within the Faculty of Fine Arts, the University of Lethbridge, and the community-at-large. The Penny Gallery is often used for graduate thesis exhibitions, but be sure to book early as the space is usually in high demand.

[CKXU 88.3 FM](#) is a volunteer driven radio society that provides independent campus and community radio and opportunities through programming, tools, training, and events in the Southern Alberta region.

The [Lethbridge Public Interest Research Group](#) (LPIRG) is a student funded/directed, not-for-profit organization providing resources for undergraduate students to engage with environmental and social justice issues. LPIRG provides [funding](#), admin assistance, meeting and storage space, and information resources to students who have projects in the public interest.

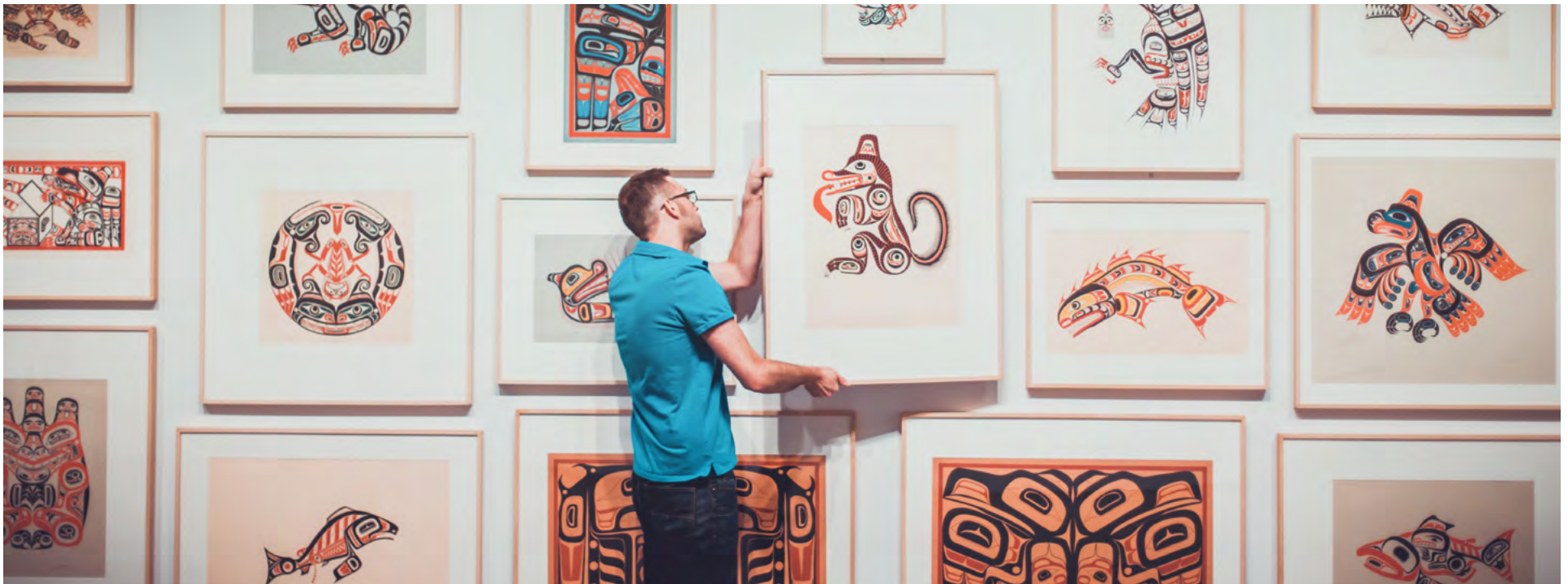
Have an event, art opening, performance, or other activity you'd like to advertise on campus? Anyone with a Uleth account is able to post to the [Notice Board](#) or request your event be added to the [Digital Signage](#) boards found across the campus.

Request [Event Setup and Support](#) if you need assistance with audiovisual technology related to your class or event. Including video conferencing, teleconferencing and web streaming sessions. Use this service to have IT Services set up equipment for your event like projectors, microphones, digital displays, video conferencing equipment, webcams or conference phones (fees may be charged depending on services).

The [University of Lethbridge Students' Union](#) (ULSU) is an organization that is in place to help make the undergraduate student experience at the U of L as rewarding and enriching as possible. The Executive Council, General Assembly members, and staff of the ULSU all work hard to make the U of L a great place to get an education, but their ultimate purpose is to listen to students' needs. ULSU also supports a variety of [Student Clubs listed here](#), which are open to all students.

The [Graduate Students' Association](#) (GSA) represents the common thread linking the diverse array of graduate programs offered at the U of L and the GSA works to serve to benefit students of all disciplines. Three pillars form and drive our vision; sustainability, advocacy, and engagement, through which the GSA works to support and advocate for graduate students at both local and provincial levels.

There are a variety of other [research centres and institutes](#) at Uleth that may be of interest to students working in the arts and research-creations, including the [Centre for Community and Culture](#), the [Centre for Oral History and Tradition](#), and many [others](#).



FACULTY OF FINE ARTS ANNUAL EVENTS

Check the notice board for [upcoming Fine Arts events](#). Fine Arts departments host regular events each semester, which will be subject to ongoing COVID-19 restrictions during the 2020-2021 academic year. A selection of regularly recurring FFA events includes:

Fall term:

- [Crossing Boundaries Symposium](#)
- Music student [junior and graduation recitals](#) (late Nov/early Dec)

Spring term:

- Art Department Faculty/Staff Exhibition
- Art Department [Open House/Studio Catalogue](#)
- Digital Audio Arts/Music Student Symposium
- Art Department graduate students critique
- New Media [Student Showcase](#)
- Music student [junior and graduation recitals](#) (March)

Year-round:

- Music at Noon: every Tuesday at 12:15pm in University Recital Hall. Free weekly concerts by University of Lethbridge Music faculty and visiting performers. Music students are featured in the Studio Showcase, the final recital of each semester.
- Art Now: every Monday/Wednesday/Friday from 12:00-12:50 pm in University Recital Hall. Lectures/presentations from local and visiting visual artists.
- Public concerts featuring numerous large ensembles from the Music Department occur near the end of the Fall and Spring terms.
- [Drama department productions](#): Mainstage productions take place twice per semester in the [University Theatre](#), while TheatreExtra productions occur once per semester in the [David Spinks Theatre](#)
- First Friday Concert Series: the [Uleth Music Conservatory](#) presents this free concert on the first friday of the month from 12:15-1:00pm in downtown Lethbridge at [Casa](#).



FINE ARTS FUNDING RESOURCES

Every year Faculty of Fine Arts student applicants who qualify are selected for monetary support to put towards education, travel, and equipment. Fine Arts-specific scholarships, grants, awards, and competitions are available and [updated through this page](#).

The [Graduate Students Association](#) provides a variety of awards to support student research, travel, and events, while the [ULSU](#) also provides financial awards for undergraduate students to support conference and event travel, as well as for start-up of student clubs.

The Dean of the Faculty of Fine Arts supports travel for MFA and MMus students through the FFA Graduate Student Professional Enhancement Award. MFA/MMus students can apply in writing to the Dean, outlining the travel they will undertake, with a maximum of \$750 awarded once per academic year. For more information, please [contact the Dean's Office](#).

External Resources:

- The [Alberta Foundation for the Arts](#) has a number of scholarships for artists, while individual project funding can be used for educational endeavours.
- The Alberta Society of Artists annually awards one [graduate student scholarship](#) and two [undergraduate student scholarships](#) for those pursuing a degree in Fine Arts in a post-secondary institution within Alberta.
- The [Alberta Media Arts Alliance Bursary Program](#) is based on regional equity, media art excellence and accountability, with AMAAS providing cash support for media art* related projects, workshops, travel, or education.
- The Social Science & Humanities Research Council coordinates the [Canada Graduate Scholarships-Master's \(CGS M\)](#) program to help develop research skills and assist in the training of highly qualified personnel by supporting students who demonstrate a high standard of achievement in undergraduate and early graduate studies.
- The [Canada Council for the Arts](#) helps individual artists, groups and arts organizations engage in projects and activities. Grants are available for Canadian citizens or permanent residents who have specialized training — though not necessarily in an academic setting — and are recognized as professionals by other artists in the field of practice.



AUDITIONS, CLUBS, ENSEMBLES, INTERNSHIPS

Art Department

- [Internships & Residencies](#) in the art department include opportunities with the Uleth Art Gallery, the Whyte Museum in Banff, the Mary Annis Gushul Residency, and the Medalta Ceramic Residency for Art Students, along with other periodic opportunities with local arts organizations.
- The [Uleth Student Art Society](#) exists to build relationships, provide resources, and help grow a sense of community within the Art Department. They also run the niche gallery, a locker-sized exhibition space on level 8.

Drama Department

- Find auditions and internships on [The Call Board](#)
- The [Theatre Arts Society \(TAS\)](#) includes one representative from each of the other drama clubs - The Unscripted Theatre Society and the Musical Theatre Society. The TAS executive elects two students as student reps to attend department meetings – one should also be on the Trust Fund Committee and the other should act as a liaison between the student clubs and the Department Chair.

Music Department

- [Ensembles](#) in the music department include the U of L Singers, the Opera Workshop, Jazz Ensemble, Wind Orchestra, Percussion Ensemble, Integra Contemporary Electroacoustic Ensemble, the Collaborative Ensemble, and opportunities with the Lethbridge Symphony Orchestra
- The [Lethbridge Musicians Facebook group](#) is a great way to connect with local musicians, learn about gigs, and score deals on used gear.
- The [Uleth Audio Engineering Society student club](#) is the Student Chapter of the International AES Organization.

New Media

- Follow this link for more [information on New Media internships](#)
- The [New Media Students' Society](#) is dedicated to encourage the creation of content and providing opportunities for students to grow through their work.

Follow this link for the full [list of all ratified fine arts student clubs](#).

LETHBRIDGE ARTS COMMUNITY RESOURCES AND VENUES

The listings below are organized by discipline, but also each resource might apply to a variety of artistic disciplines. Look through them all to find interdisciplinary opportunities to engage and participate in artistic projects and events around Lethbridge.

The [Allied Arts Council of Lethbridge](#) works to encourage, coordinate and promote the arts in Lethbridge & area. AAC operates [Casa](#) - a unique facility that provides people of all ages and abilities, appropriate, safe and affordable space to create and present works of art. Encompassing approximately 42,000 sq. feet of studio and presentation space, Casa offers the community an opportunity for positive art experiences in all arts disciplines.

Casa is also home to the [University of Lethbridge Conservatory of Music](#) - a community-focused music school run by the Faculty of Fine Arts. Made up of highly trained musicians from the U of L Department of Music and distinguished musicians from the community, the conservatory offers group classes, ensembles and private lessons to students of all ages and abilities in Lethbridge and surrounding communities. Their mission is to nurture the musical potential in everyone - every age, every level, every aspiration.

ART

- The [Southern Alberta Art Gallery](#) fosters the work of contemporary artists who challenge boundaries. SAAG encourages broad public engagement and promotes awareness and exploration of artistic expression - work that extends to local, national, and international communities.
- The [Trianon Gallery](#) hosts workshops, plays, dances, musical events, fundraisers and a wide variety of art exhibitions. Nationally and internationally renowned artists as well as students of all ages have shown their work and shared their energy to help make the Trianon Gallery a very positive celebration of life and art in Lethbridge.
- [Mortar & Brick](#) is a premium art gallery and event venue in Lethbridge, Alberta. It hosts up to 150 people, and features regional, relevant, and modern art.
- [Trap\door Artist Run Centre](#) is a community supported, not-for-profit artist-run platform for contemporary art. Trap\door encourages untested and emerging art practices and supports artists at an early stage of their careers.

DRAMA

- [New West Theatre](#) has a mandate of producing a diverse range of theatrical productions for Southern Albertan audiences, from American classics, to Broadway musicals, contemporary Canadian theatre, Theatre for Young Audiences and original creations. In addition to their regular season New West offers educational programming to young people through Summer Theatre Camps, Theatre School and in-school residencies.
- [Theatre Outré](#) is a professional theatre company based in Lethbridge, Alberta. Founded in 2012 by artistic director Jay Whitehead, Theatre Outré is a leading outlet for alternative queer theatre in Alberta and the producer of the hugely successful Pretty Witty & Gay Cabaret & Festival. It also operates its own venue in Lethbridge, Didi's Playhouse (formerly Club Didi and Bordello).

LETHBRIDGE ARTS COMMUNITY RESOURCES AND VENUES (CONTINUED)

MUSIC

- The [Lethbridge Folk Club](#) exists to make the experience of live music readily available to people in Southern Alberta and to support the musicians that create the music.
- The [Geomatic Attic](#) provides high quality performances in an intimate concert space, presenting 15-20 shows per year featuring renowned touring musicians and talented local performers. This 100 seat theatre and adjoining lobby is now home to an Art Gallery and hosts yoga classes and other wellness activities.
- The [Lethbridge Symphony Orchestra](#)'s mission is simple: to create and promote a first class orchestra producing memorable musical experiences for audiences of all ages.
- [Lucky Star Guitars](#) is an independent, brick and mortar shop specializing in fine electric, acoustic instruments and vintage instruments. Lucky Star stocks a wide variety of rare, new and used electric guitars, acoustic guitars, banjos, mandolins as well as rare amplifiers, effect pedals, microphones and accessories.
- [Mezei Tone](#) offers honest guitar repair and luthier services at affordable rates. Uleth (Music) alumnus Scott Mezei stands behind his work and customizes his services to your needs.
- [Glacier Amplification](#) specializes in vintage tube guitar amps, repair, modification, service, design and construction of all things music equipment related.
- [Long & McQuade](#) is one of the largest music stores in Lethbridge, offering a wide range of musical instruments, guitars, drums, music lessons & more.
- [CKXU Radio Society](#) offers opportunities for music broadcasting and learning the ropes of the broadcasting industry (see Cross-campus resources for all students)
- Both [The Owl Acoustic Lounge](#) and [The Slice Bar & Grill](#) offer live music regularly, with frequent open-mic nights - great places to meet local musicians!

NEW MEDIA

- [Tecconnect centre for entrepreneurship and innovation](#) is exactly what it sounds like – a vibrant place for entrepreneurs to start and grow their business within a supportive and innovative environment. It's a space and community that encourages the development of new ideas that transform industries and shape the future.
- [TechBridge Innovation Centre](#)'s purpose is to foster connection, creation and thoughtful innovation, so that people can experience fulfillment personally and as a community. They provide access to space, tools, technology and instruction for exploration, education and entrepreneurship.

PROVINCIAL ARTS COMMUNITY RESOURCES

The [Alberta Foundation for the Arts](#) (AFA) exists to encourage and support the arts as a significant contributor to quality of life in Alberta, as a public agency and a provincial corporation of the Government of Alberta. AFA provides [grant funding to artists and art organizations](#) to encourage the growth and development of the arts sector. AFA also promotes the arts and manages an extensive [provincial art collection](#) featuring work from artists all over the province.

The [Alberta Media Arts Alliance](#) (AMAAS) serves media artists and organizations through advocacy, development opportunities and connecting media artists and media art organizations across the Province. Programs include educational and networking opportunities at their biannual conference & symposiums, publications, [awards](#), sponsorship, and artist commissions.

The [Film and Video Arts Society of Alberta](#) (FAVA) is a not-for-profit, charitable organization that supports the production, exhibition and distribution of film, video and media art in Northern Alberta. From celluloid to 4K; narrative to experimental to documentary and beyond, FAVA is your one-stop DIY shop - also providing equipment rentals, events, classes and more.

The [Alberta Music Industry Association](#) (Alberta Music) is a non-profit, service-based association dedicated to helping professionals in the music industry to succeed in their careers. Alberta Music is here to build, connect and inspire a dynamic Alberta music industry, providing consultations, programs, advice, workshops, and [information on grants](#).

[EMMEDIA](#) is professionally managed and directed by practicing artists, offering affordable access to media art production tools, services, to technical and educational support, and to an array of public exhibition programs. The centre provides a focus for media arts activity and a gathering place for artists to interact and exchange ideas, with public screenings, lectures, installations and performances; introductory, advanced and custom workshops; artist residencies; production awards and scholarships.



ADDITIONAL RESOURCES

The [School of Graduate Studies](#) provides program-related support and information. Associated graduate studies offices within individual faculties provide program-specific information and advising. You can also find [sample program Gantt charts](#) for most graduate-level programs that outline a sample timeline for full-time students who begin their programs in the Fall term (September to December), to make sure you stay on track in your studies.

[Counselling Services](#) focuses on improving your total well-being. Mental-health professionals can help to facilitate your personal growth, academic skills development, and career decision-making while you are attending the University of Lethbridge.

The [Accommodated Learning Centre](#) helps students with a wide range of needs. By providing learning strategies, technological support and exam accommodations, they create a supportive learning environment for every student.

[likaisskini: Indigenous Student Centre](#) offers support services for those students who self-identify as First Nations, Métis, or Inuit. The primary role of the advising office is to guide, encourage and empower students in the university environment, and provide access to peer support, social interaction, cultural/spiritual celebrations as well as the Education Resource Library.

The [Campus Women's Centre \(CWC\)](#) is a resource and referral centre for women-identifying, trans, non-binary & genderqueer individuals that is dedicated to advocating for positive change by empowering and celebrating marginalized communities.

[International Student Services](#) assists international students in adapting to campus life socially, academically, and culturally – supporting students in all aspects of your life, both as a uLethbridge student and as a visitor to Canada.

The [University of Lethbridge Health Centre](#) exists to enrich student's living and learning potential through the provision of proactive health/mental health education, on-site health /mental health care and basic health/mental health insurance information.

[Parent Rooms](#) are accessible to anyone on campus who wishes to feed or spend some quiet time with their baby or toddler.

COMMENTS, QUESTIONS, CONCERNS?

Please reach out to asterix@uleth.ca for more information and support.